

Share the . . .

Volume 31, Issue 3

SPIRIT

January 23, 2010

Resurrection Lutheran Church

4114 E. Oakland Avenue, Bloomington, IL 61704 (Towanda Barnes and Oakland)
(309) 663-8252 www.reslutheran.org



In This Issue

[Annual Meeting](#)
[Stand with Africa](#)
[Women's Retreat](#)
[Calendar and Lectionary](#)
[People Power This Weekend](#)
[January 30/31 People Power](#)
[Haiti Earthquake Relief](#)

[FOTCOH Silent Auction](#)
[Ministry Prayers](#)
[2009 Contribution Statements](#)
[2010 Offering Envelopes](#)
[Safe Harbor Support Needed](#)
[Sanctuary Window Coverings](#)
[Heart of Faith Gala](#)

[Your Eco-Bit](#)
[Shoe Collection](#)
[LSSI Adoption Web Site](#)
[Prayer Partners Selection](#)
[Our Giving and Attendance](#)
[RLC Staff and Info Page](#)



Resurrection Lutheran Church, Sunday, January 31, 12:01 p.m.

Agenda:

Questions and comments on the 2009 Annual Report
Discussion and voting on the 2010 Mission Proposal

2009 Annual Report:

Paper copies of the 2009 Annual Report are available from a table in the Narthex.
You can also access the report from the RLC web page,
<http://www.reslutheran.org/2009%20RLC%20Annual%20Report.pdf>.

Mission Proposal:

The proposed 2010 budget is included in the Annual Report.

Mission Proposal Adult Forum on January 24:

The Adult Forum at 9:30 a.m. on Sunday, January 24, will be a discussion of this year's Mission Proposal.

Stand with Africa – Malaria and HIV/AIDS Issues



This Epiphany, we are lifting up the work of the ELCA with the Stand for Africa campaign which addresses the issues of clean water, malaria, and HIV/AIDS throughout Africa.

Stand with Africa is a campaign led by the ELCA to grow awareness and support for the people of Africa and the gifts we have for each other. Throughout January, we will share in the lives of our African brothers and sisters through temple talks, special music, Adult Forums, and invitations to give.

Mosquito Net Coin Collection: The hanging mosquito net by the entrance to Grace Hall serves as a reminder of our special partnership in the Lutheran Malaria Initiative. Donations tossed in this net will go toward purchasing mosquito nets for \$10 each and other supplies necessary for the Initiative's goal of eliminating malaria by 2015.

Dragonflies: Dragonflies are natural predators of mosquitoes and serve as a symbol for malaria-containment efforts. All are invited to stop by the table in the Narthex, color a dragonfly, and post it on our Stand with Africa/Lutheran Malaria Initiative bulletin board. Dragonfly stickers are also available to help you remember to tell others how to help fight malaria.

HIV/AIDS: To date, over 25 million people have died of AIDS, and an estimated 33 million people live with HIV. Sub-Saharan Africa is home to 67 percent of all people living with HIV. Nearly 12 million children in the region under 18 have been orphaned by AIDS.

January 31 Adult Forum on HIV/AIDS: The Sunday morning Adult Forum on January 31 will be led by David Creech Director for Hunger Education, ELCA World Hunger Program and will address HIV/AIDS issues.

“Sweet Life Café” Women’s Ministry Overnight Retreat February 5 and 6 at Camp One Way– Sign up by January 24

There's still time to register for the Women's Annual retreat, coming up on February 5 and 6 at Camp One-Way in Mt. Auburn, Illinois

Join other RLC women and friends for a special chance to sample God's word, savor some great food, and feast on Jesus, the "bread of life" in worship, singing and Holy Communion. Treat yourself and your spirit to some personal quiet time, as well as small group sharing, and creative craft time. Our retreat leaders are six talented Resurrection women!

This year, the schedule is a bit different. We will meet at RLC on Friday evening at 5:30 p.m. and carpool to the retreat together. We'll enjoy a simple supper of a hearty soup and fresh bread when we arrive at the camp. Then we'll begin the first session, and have some fun creative "down time" and snacks.

The Saturday schedule includes large and small group sessions, a delicious lunch, a guided personal meditation, communion worship, a service project, and a sweet send-off. You should be back at RLC by 5 p.m.

Camp One Way has a simple, cozy atmosphere, with enough space for each woman to have her own sleeping room. For those of you not able to stay over on Friday night, there will be several women carpooling on Saturday morning, so please specify that on your registration form.

Please place your registration forms with your \$75 check made out to "RLC" in the black box at the Welcome Station by Sunday, January 24, to help the Retreat Team lovingly prepare for our time together. This is a great retreat for inviting friends.

If you have any questions, please contact Linda Cooper or Kathy Eckert, 309-663-8252.

Thanks from the Retreat Team: Betsy Huls, Ann Hill, Julie Weilbacher, Linda Cooper, Carolyn Bojarowicz, Sherri Watson, and Erin Luckey.

January 23 to 31 RLC Ministry Events

- Sat., 1/23** **Alive @ Five Worship, 5 p.m.**
Prayer Partner Selection
- Sun., 1/24** **Worship, 8:15 and 10:45 a.m.**
Sunday School/Zero 39, 9:30 a.m.
Mission Proposal Adult Forum, 9:30 a.m.
Adult Choir Rehearsal, 9:30 a.m.
Prayer Partner Selection
LYO December – January Birthday Lunch
 @ Coffee Nation, noon
LYO VAV, 4:30 p.m.
To Save a Life Movie Outing, 7 p.m.
January 30 *Spirit* Deadline
- Mon., 1/25** Stretch and Pray, 5:45 p.m.
Disciple Bible Study, 7 p.m.
- Tues., 1/26** Stephen Ministry, 6:30 p.m.
- Weds., 1/27** Midweek Prayers, 10 a.m.
Confirmation, 5:50 p.m.
Prayer Partners Team, 7 p.m.
Adult Choir, 7 p.m.
- Thurs., 1/28** Women's Banquet Planning, 7:30 a.m.
 @ Jamani Java
Autism Parents Support Group, 6:30 p.m.
- Fri., 1/29** No Events Scheduled
- Sat., 1/30** **Alive @ Five Worship, 5 p.m.**
- Sun., 1/31** **Worship, 8:15 and 10:45 a.m.**
Sunday School/Zero 39, 9:30 a.m.
HIV/AIDS Adult Forum, 9:30 a.m.
Adult Choir Rehearsal, 9:30 a.m.
Annual Meeting, 12:01 p.m.
February 5 *Spirit* Deadline



January 31 Lectionary

The **Fourth Sunday after Epiphany** scripture references for January 31, 2010: **First Lesson** – Jeremiah 1:4–10; **Second Lesson** – 1 Corinthians 13:1–13; **Gospel** – Luke 4:21–30; and **Psalms** 71:1–6.

Reflection: The glory of God is often revealed when and where it is least expected. God uses our lips to declare that glory, inexperienced and hesitant though they may be. God uses our love to demonstrate that glory and so urges us to exercise it. God uses Jesus of Nazareth, water and the word, bread and wine, to reveal God's glory where and when God chooses. Take heed, lest the glory of God slip through our midst unnoticed.

© Augsburg Fortress 2010

January 23 and 24 People Power Reminders Fourth Saturday and Sunday Purple Teams

From Monday to Thursday, please contact Marcia (663-8252; marciafetzer@verizon.net) to report trades or substitutions. On Friday, Saturday, or Sunday morning, call the Steward for your worship service with changes.

You can also note changes on the People Power calendar posted on the bulletin board in the Nursery Alcove. Stewards: be sure to always check the calendar for the most recent information prior to the start of worship.

January 30 and 31 People Power FYI

Because January 30 and 31 are a fifth Saturday and Sunday, the Blue Second Week Team has been assigned to serve.

Relief for Victims of the Earthquake in Haiti



Bishop Warren D. Freiheit, Central/Southern Illinois Synod, suggests that we pray for:

- those whose lives have been so dramatically affected by this deadly earthquake;
- those who have become personally involved with relief efforts so that they may be safe in their efforts, and experience the energy and strength they need in their work;
- the many religious institutions that have already been ministering among the people of Haiti;
- the efforts of so many countries who have already responded and have pledged further help as the disaster unfolds;
- those working through Lutheran Disaster Response so that they will receive the financial support they need to make a difference in this terrible situation; and
- the people of our country who are already dealing with a severe financial downturn, that they may find it in their hearts to extend financial help to a situation far more severe than our own.

ELCA: The ELCA Disaster Response web page provides earthquake relief updates and details on how to offer financial support (<https://community.elca.org/NetCommunity/SSLPage.aspx?pid=538>). Checks can also be placed in the offering plate marked for ELCA Haiti Relief, and they will be forwarded to Lutheran Disaster Relief. The mailing address is ELCA Disaster Response, 39330 Treasury Center, Chicago, IL 60694-9300.

Thrivent Financial for Lutherans will add \$1 to every \$2, up to a total Thrivent Financial contribution of \$1 million, when its members donate to one of the following:

- Lutheran World Relief
- ELCA Disaster Response
- LCMS World Relief/Human Care
- WELS Committee on Relief

Thrivent Financial will add a maximum of \$250 per member donation, and donations will be accepted through March 31, 2010. See <https://www.thrivent.com/helpinghaiti/> for details.

FOTCOH: You can also support the Friends of the Children of Haiti and follow the medical mission team's blog at www.FOTCOH.org. Checks placed in the offering plate marked for FOTCOH Haiti Relief will be forwarded to FOTCOH. The mailing address is Friends of the Children of Haiti, P.O. Box 789, Peoria, IL 61652.

FOTCOH Silent Auction

A silent auction to support Friends of the Children of Haiti (FOTCOH) is being planned for February. **WE ARE IN NEED OF DONATIONS AND WOULD GREATLY APPRECIATE YOUR CONTRIBUTIONS.** If you would like to donate time, talent, or material gifts to be auctioned, please bring them (or a written description) to the office cubicle closest to the Nursery by Sunday, February 15.

Items will be on display for bidding from February 12 to 21, with the bidding deadline at 10:45 a.m. on Sunday, February 21. Additional ways to support FOTCOH's mission will be available. No contribution is too small (or large!).

ALL funds will go to operating costs of FOTCOH, the primary use being to purchase medications to dispense at the clinic.

For special arrangements regarding your contribution, contact Trudy Vogel, Sharon Hoy, or Kathy Neil.



Ministry Prayers

Friends of the Children of Haiti: O God, you bring good news to those who are despairing. Help us to hear the cries of all who are enduring trials and suffering because of the earthquake in Haiti. Enliven all your children to respond with compassion, aid, and your care so that all may know the hope of your grace. We pray especially for the Friends of the Children of Haiti medical mission team, including RLC members Paul and Trudy Vogel, which is ministering to the earthquake victims. Keep them safe in body, mind, and soul during the many challenges that they will encounter while in Haiti.

2009 Contribution Statements and 2010 Offering Envelopes

Please pick up your 2009 contribution statements and 2010 Resurrection offering envelopes from the table in the Narthex near the church office.



Safe Harbor Support Needed

For the first half of 2010, volunteers are needed to prepare and serve meals for the clients of the Safe Harbor homeless shelter in downtown Bloomington on the following Mondays: February 15; March 15; April 19; May 17; June 7; and June 21. Please sign up on the Kiosk in the Narthex.

You may prepare either at Safe Harbor or RLC. The meals should be ready to serve at 7 p.m.

Additional food donors are also needed on the first and third Mondays of every month. A new sign-up sheet is posted every other week.

Contact Viola Freimann or Chris Ayers if you have questions.

Sanctuary Cross Window Coverings



Throughout the year, we often hear concerns about the coverings for the windows behind our Sanctuary cross. Sometimes the coverings are put in for effect, but mostly it is to block the light which can make it difficult for people to follow along with worship and music.

Several worshipers have reported that, when the sun is bright, they can't see the wall screen and therefore can't sing the songs or view the videos that we show.

We are aware that the covers bother some people, but, for now, this is the best solution to our problem. If you have another suggestion, please talk to the pastors or the music leadership.

You are cordially invited to join Faith in Action at the

Heart of Faith Gala 2010 **Saturday, February 13, 6 to 10 p.m.**

Celebrate a festive evening with family and friends and support Faith in Action at the same time. The event will take place on Saturday, February 13, from 6 to 10 p.m. at the Park Hotel and Conference Center, 1414 N. Towanda Barnes Road, Bloomington.

Enjoy a live performance by Acafellaz, Love Song Serenades by local artists, cash bar, dinner, and silent auction for \$50 per person. For reservations, call 309-827-7780.



LSSI's New Adoption Web Site Launched

Lutheran Social Services of Illinois (LSSI) just launched the all new www.AdoptionIllinois.org, its adoption Web site. The updated site showcases what LSSI has to offer for all persons touched by adoption – birth parents, adoptive parents (including potential adoptive parents) and adopted persons.

LSSI is a member of A Lutheran Adoption and Foster Care Alliance (LAN). Information is easy to find, whether a site visitor is a birth mom who is seeking to create an adoption plan, or is a potential parent seeking to grow a family through adoption. In particular, the updated site has more content for birth parents.

The largest group of people LSSI's adoption program serves is people who are trying to do a search for a birth parent or child, or who are maintaining contact in an open adoption. Basic information about how to maintain contact in an open adoption, how LSSI can help, and information about search and reunion services are now available on the redesigned site.

"We're also hoping to be a resource for birth moms who are considering adoption," says Ruth Jajko, who oversees LSSI's Adoption Services, adding that the new site enables LSSI to post pictures and information about families waiting to adopt. "I'm very pleased to offer our families a chance to post their information online, in the hope that a birthmother will see them and decide they are a good choice for her child," she says.

Your Eco-Bit

Earth-Saving, Energy-Saving Tips and Tidbits from the Eco-Justice Team

If you're looking for ways to save money this year (and save the environment at the same time), check out these two resources:

Federal Tax Credits for Consumer Energy Efficiency: Learn what energy-related home improvements will get you a federal tax credit in 2010 at http://www.energystar.gov/index.cfm?c=tax_credits.tx_index.

The Database of State Incentives for Renewables and Efficiency: Visit this state-by-state list at <http://www.dsireusa.org/> to see incentives, grants, loans, and credits available in our area.



God's World . . . Our Hands

Prayer Partner Selection on January 23 and 24

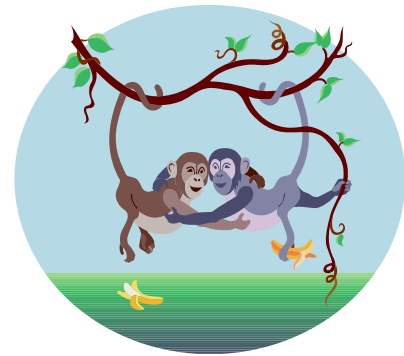
Prayer Partner Selection: On Saturday, January 23, and Sunday, January 24, we'll display the pictures of all the Sunday School classes with students who want to be Prayer Partners identified, and adults will choose youth Prayer Partners.

Adults, if you will not be at church this weekend, please contact Mary Meier before January 23. Otherwise, we will assign you a Prayer Partner.

Information Sheets: Before and after worship on January 30 and 31, information sheets can be picked up in the Narthex by all Prayer Partners.

Photo Buttons: Pictures will be taken and Prayer Partner buttons will be made during the Kick-Off on February 7.

More Information: If you have any questions about Prayer Partners, please contact Mary Meier (663-8252; MaryMeierRLC@verizon.net).



**I am the vine, you are
the branches.**

John 15:5a

“Shoeman” Shoe Collection Continues

Bring your old shoes to RLC and place them in the collection box in the Narthex. They will be recycled, and the proceeds will be used to purchase hydraulic drilling rigs for digging wells that pump clean water for people in Kenya. For details, contact Sharon Hoy or visit www.shoeman.org.

Our Giving and Attendance

Dates 12/28/09-01/03/10

Offering: \$7,106.56

Weekly Mission-Based Goal: NA

Year-to-Date: \$7,106.56

Year-to-Date Mission-Based Goal: NA

Weekend Worship Attendance: 125

Dates 01/04/10-1/10/10

Offering: \$4,888.84

Weekly Mission-Based Goal: NA

Year-to-Date: \$11,995.10

Year-to-Date Mission-Based Goal: NA

Weekend Worship Attendance: 214

Dates: 01/11/10-01/17/10

Offering: \$10,890.34

ELCA Haiti Earthquake Disaster Relief: \$1,140.00

Friends of the Children of Haiti: \$1,588.00

Weekly Mission-Based Goal: NA

Year-to-Date: \$22,885.44

Year-to-Date Mission-Based Goal: NA

Weekend Worship Attendance: 275 (includes 74 for Wings and Prayers)

This information is preliminary and has not been verified by the Financial Secretary, so it may change slightly after verification.





Resurrection Lutheran Church

4114 E. Oakland Avenue, Bloomington, Illinois 61704
(Towanda Barnes Road and Oakland Avenue)
309-663-8252; www.reslutheran.org



Schedule of Services

Alive at Five Saturday Worship – 5 p.m.
Sunday Worship – 8:15 and 10:45 a.m.

Sunday School for All Ages – 9:30 to 10:30 a.m.

Office Hours: Monday to Thursday, 9 a.m. to 4 p.m.

Resurrection Staff

Co-Pastor	David Armstrong-Reiner	PastorDavidRLC@verizon.net
Co-Pastor	Mary Armstrong-Reiner	PastorMaryRLC@verizon.net
Ministry Leader for Spiritual Formation	Kathy Eckert	KathyEckertRLC@verizon.net
Ministry Leader for Administration and Finance	Nikki Houseman	NikkiHouseman.RLC@verizon.net
Administrative Assistant	Marcia Fetzer	MarciaFetzerRLC@verizon.net
Administrative Assistant	Becky Domkuski	BeckyDomkuskiRLC@verizon.net
Publications Secretary	Mary Meier	MaryMeierRLC@verizon.net
Music Director for Blended and Contemporary Worship	Jerry Worden	
Music Director for Traditional Worship Service	Doug Reiners	
Church Cleaner	Elda Lowe	

RLC Vision:

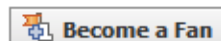
Communities claimed and empowered by God for hope and wholeness

RLC Mission:

Resurrection Lutheran Church exists to:
Invite people into the body of Christ,
Ignite passionate growth in faith, and
Excite believers for lives of service.



Resurrection Lutheran Church of Bloomington, Illinois on Facebook



Resurrection Lutheran Church of Bloomington, Illinois on Facebook